

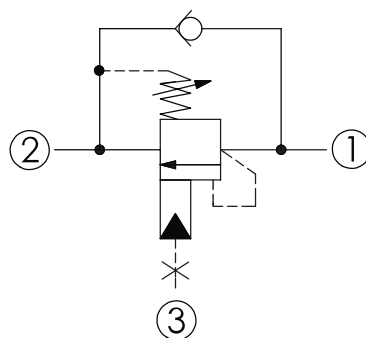
CCB-2A - Counterbalance valve

Without pilot assist, 3 port cavity

1 Available versions

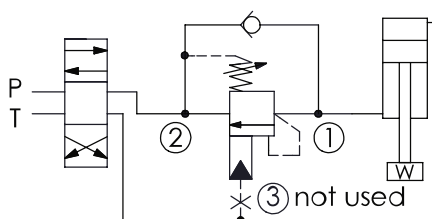
Ordering example:

CCB-2A	-23	-H	-L
Type	Pilot ratio	Spring	Option



- 1 Load
- 2 Valve
- 3 Without pilot assist

Example: application example



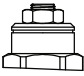
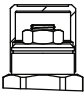
Pilot ratio

Coding	Description
23	Without pilot assist, 3 port cavity

Spring

Coding	Pressure (bar)	Standard setting (bar)
Adjustment ranges (1.7 bar cracking pressure)		
H	70 - 280	210
I	25 - 105	70
Special purposes (0.3 bar cracking pressure)		
A	70 - 280	210
B	25 - 105	70
E	16 - 55	25

Option

Coding	Option	Drawing
L	Leakproof hex. socket screw.	
CA	Plastic tamper resistant cover	

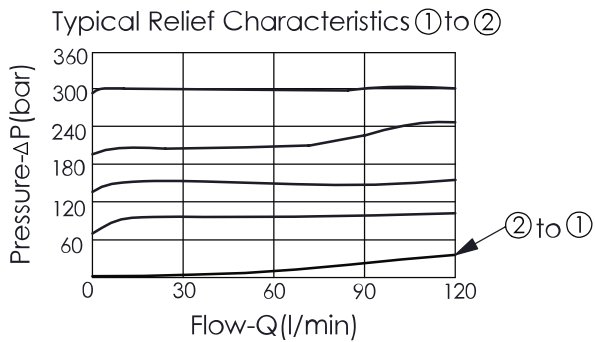
2 Technical data

Operating pressure p_{max}	280 bar
Flow rate Q_{max}	120 l/min
Installation torque	60 - 70 Nm
Cavity	T-2A
Weight	L: 0.278 kg

i INFORMATION

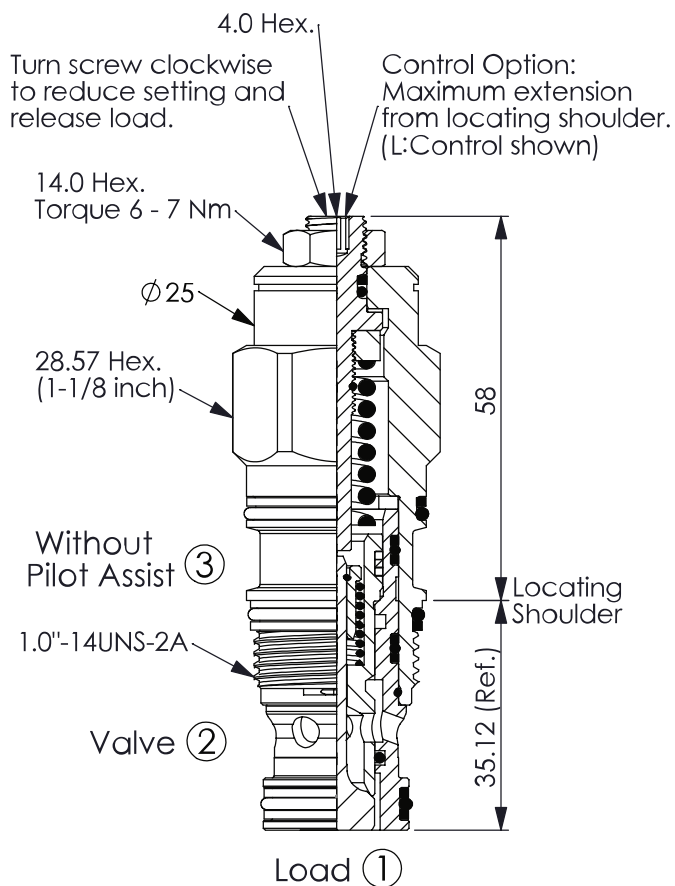
- Pressure setting: Setting should be 1.3 times maximum load induced pressure.
- We suggest when the max. setting pressure is 280 bar, the load pressure has to be lower than 215 bar.

Characteristic lines



3 Dimensions

All dimensions in mm, subject to change.



4 Other information

see [Technical information HAWE cartridge valves: D 8219](#)

see [Recommendation for hydraulic fluid: D 5488/1](#)

